

# Wire Wound 3 Pin Power Inductors-SMD Series



## FEATURES

- Lead-free materials in used for the plating on the terminals.
- The product uses metal terminals, which realize excellent connection reliability
- Unshielded power inductor
- Harious package size and wide inductance range.

## APPLICATIONS

- Graphic cardsl, cordless phone. Buzzer alarm, Personal computers, Humidifier.

## PRODUCT IDENTIFICATION



01 Type	
ZSMD	Wire Wound power Inductor

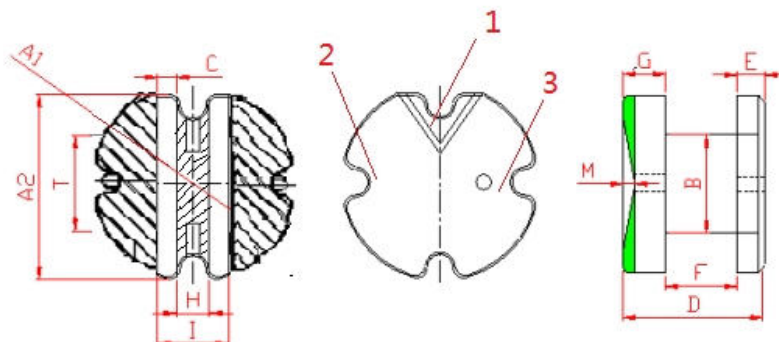
02 External Dimensions (LxW)(mm)	
5845	5.8x 4.5
8050	8.0x 5.0

03 Nominal Inductance(L1-L2)	
Example	Nominal value
250	25uH
251	250uH
252	2500uH

04 Nominal Inductance(L3-L2)	
Example	Nominal value
800	80uH
801	800uH
802	8000uH

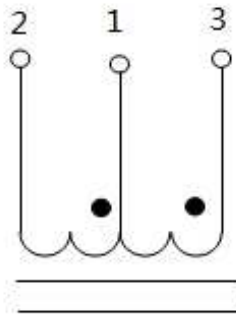
05 Tolerance	
J	±5%
K	±10%
M	±20%

## SHAPE AND DIMENSIONS



Part Number	Dimensions(mm)											
	ΦA1	ΦA2	B	D	E	F	G	C	H	T	I	M
ZSMD5845	5.9±0.1 5	5.2±0.1 5	1.5±0.1 5	4.5±0.1 5	1.00±0. 10	1.20±0. 10	1.20±0. 15	1.04±0. 10	1.04±0. 10	3.02±0. 10	1.50±0. 10	0.30±0. 10
ZSMD8050	8.0±0.1 5	7.06±0. 15	3.00±0. 15	5.2±0.1 5	1.00±0. 10	2.60±0. 15	1.60±0. 15	1.04±0. 10	1.04±0. 10	3.52±0. 10	3.30±0. 10	0.33±0. 10

## ELECTRICAL DIAGRAM



- Such as: 1.2.3 is the winding foot position, 1 is the common foot in the middle, the sensitivity of 1-2 feet is 25uh, and the sensitivity of 1-3 feet is 800uh.

**Remark: Design as Customer's request specification.**